

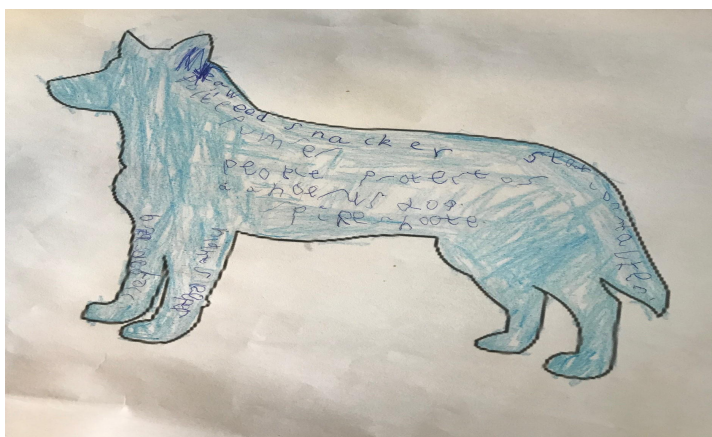


Mount Tamar  
Aspire - Adventure - Achieve



10th May  
2019

# The Tamar Weekly



Mount Tamar School and  
Drake's View House  
Part of the Quay Partnership

Tel: (01752) 365 128

[www.mounttamar.org.uk/](http://www.mounttamar.org.uk/)

Email: [admin@mounttamar.org.uk](mailto:admin@mounttamar.org.uk)

# A word from the Headteacher...

Greetings!

As a whole school we have all been working on how to greet people when we meet them. To make it a little more exciting and personalised you may have seen some of our pupils on Twitter making up their own particular greeting which includes; handshakes, hugs, fist bumps and even dancing. Maybe you could have a go at home and send us some photos for our Facebook page!

We have been putting plans together this week for our summer Activity Week. This will be on the last three days of the term, more information will be out to you next week so you can have a look at the choices over the holidays.

Year 11 have started their exams this week and are working hard. After the holidays we will be putting on a timetable for them that gives revision classes based around the dates of these exams. Their official leaving date is the last Friday in June. This will all be detailed in a letter that will be sent out this week.

Please watch out next week for a letter arriving at home giving information for all pupils on timetables and new tutor. If you have any questions then please do contact us.




## Word of the week...

w/c: 13/5/19

Benevolent

Definition: to be well meaning and kind.



Please keep Facebook and Twitter pages, we use social media daily to update and inform carers and parents of what has been going on in and around school and future events. We are always striving for excellence, if you have any suggestions for how we can improve come in and have a chat to Hayley or Sandra.

# School Cabinet meets Tracey Lee



Tracey Lee, Chief executive Of Plymouth City Council, came to our school to have a chat with our class MP's and Cabinet. During the meeting we discussed what we love about Mount Tamar. For example, Drake's View which is amazing, our partnership with the Aquarium and Zoo and about how our teachers really make learning fun and they understand us so well. Some of the things we would like to add to our school were also discussed such as, a subway station added to our lunch options, a new building that would have a sensory room and a common room, and having the school roof fixed.

We then spoke about our home city - Plymouth, Tracey was keen to find out our thoughts and if there was anything else, we would like to see here. Tracey was then given a private tour around the school by Brandon another one of our school parliament.



# Dates for your Diary



**Tuesday 14th May 11am-1pm** - Managing Distressed Behaviours Information Session - all parents and carers welcome

**Thursday 23rd May**- Parent/Carer Coffee Morning

**Friday 24th May**- Last day of term

## Reading Books

The school library has a large variety of books which students are welcome to borrow and take home to read with you.

In reception there is also a selection of children's books for sale as well as a book swap for parents/carers and staff.



# Managing Distressed Behaviours

Tuesday 14<sup>th</sup> May

11am until 1 pm

Therapy Suite

Barbara Marshall, one of the ladies from our Therapy Team is running an information session for all parents and/or carers.

The theme for this session is Managing Distressed Behaviours.

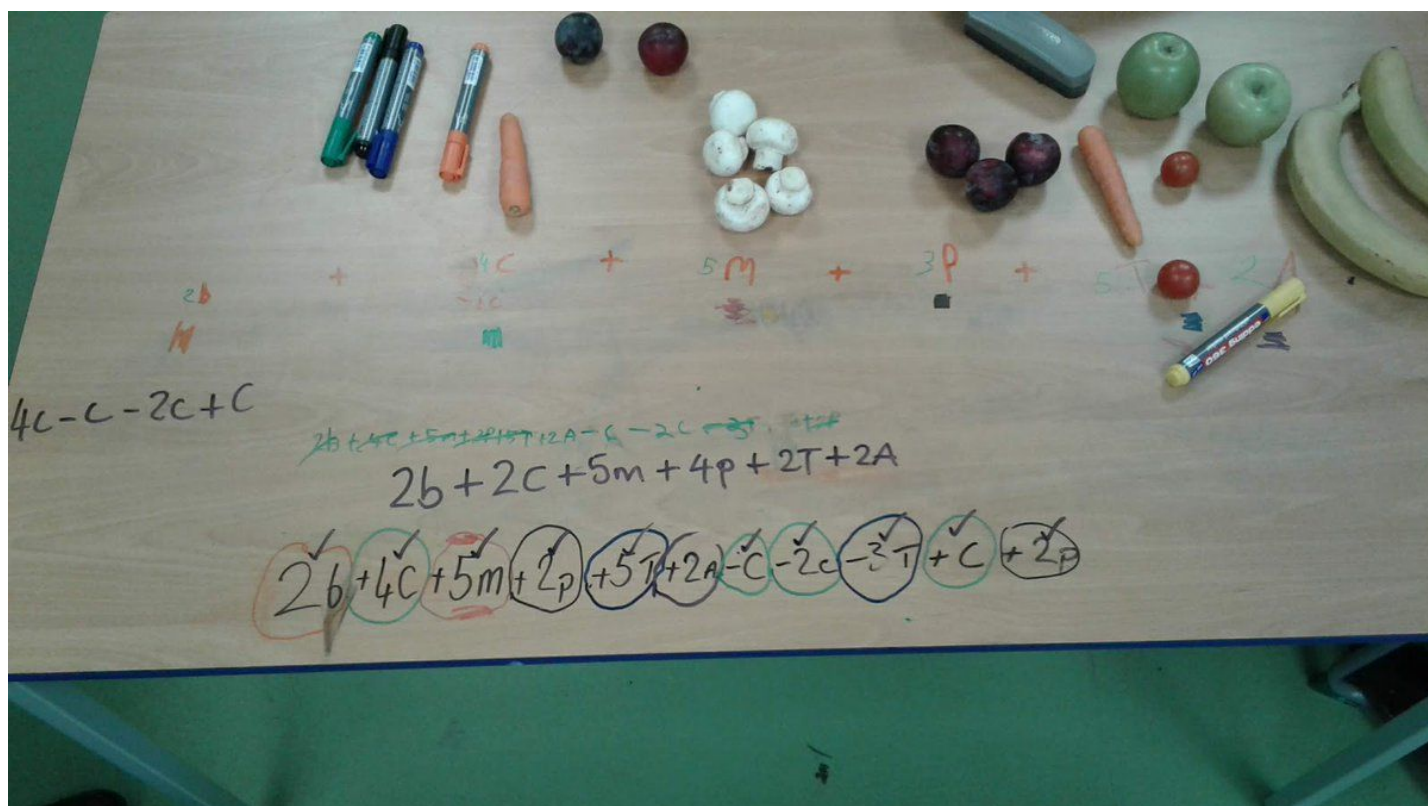
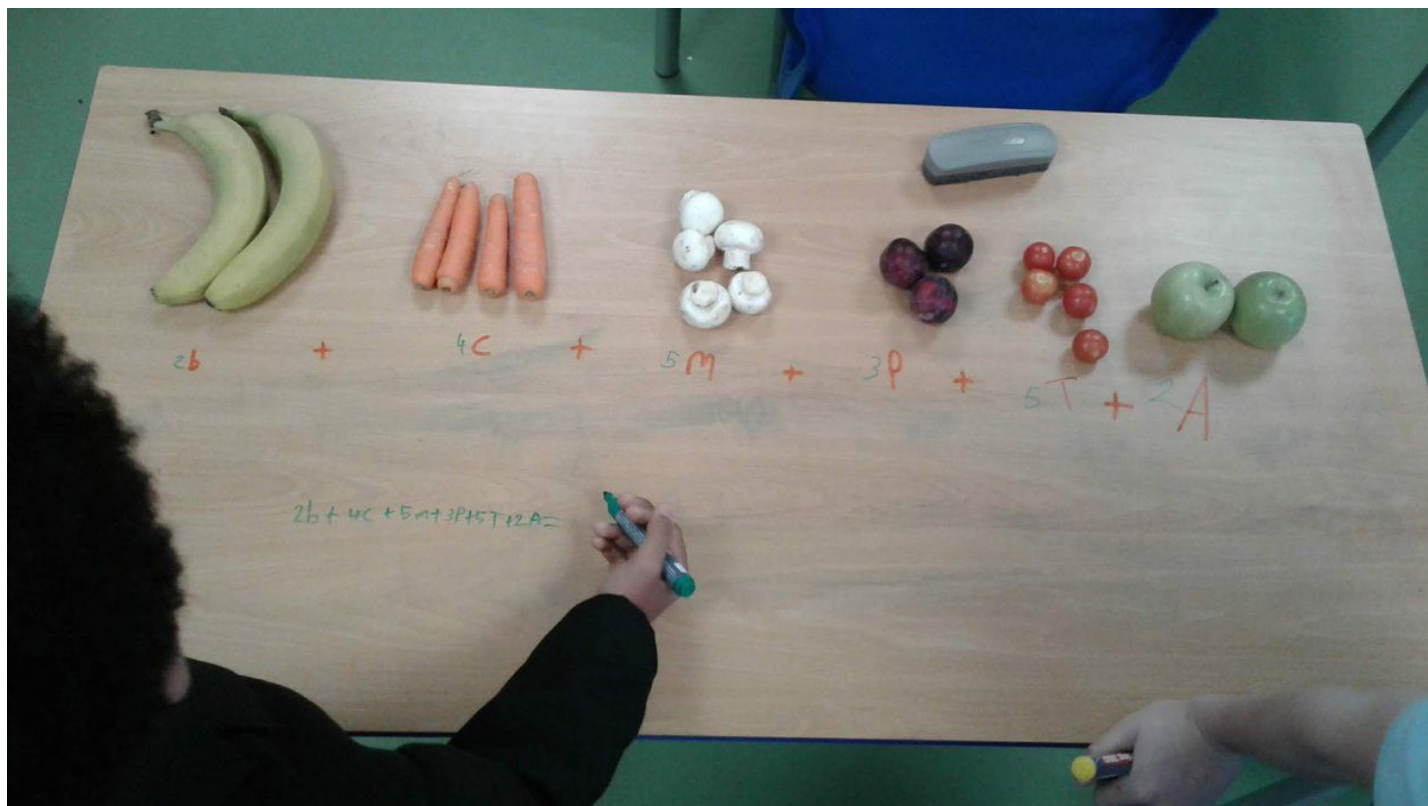
We will be aiming to explore the changes which can occur when a person is overwhelmed by life events and the strategies that caregivers may have in their tool box to help their child.

**For more information contact our Parent Support Advisor Hayley Lee on 01752 355018 or email [h\\_lee@mounttamar.org.uk](mailto:h_lee@mounttamar.org.uk)**



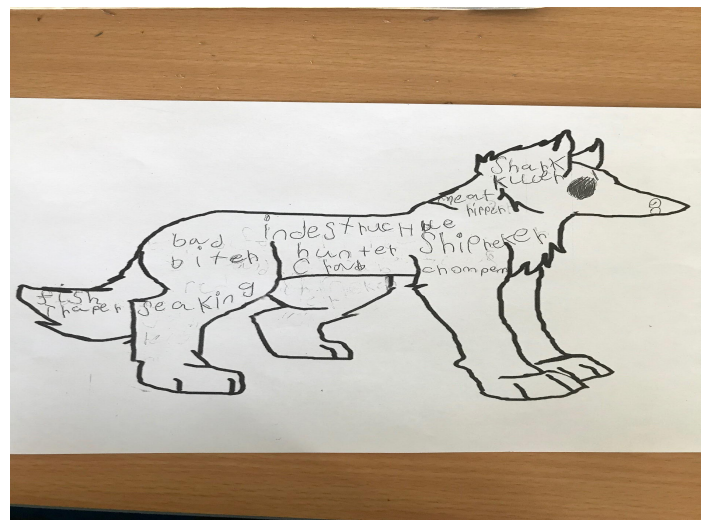
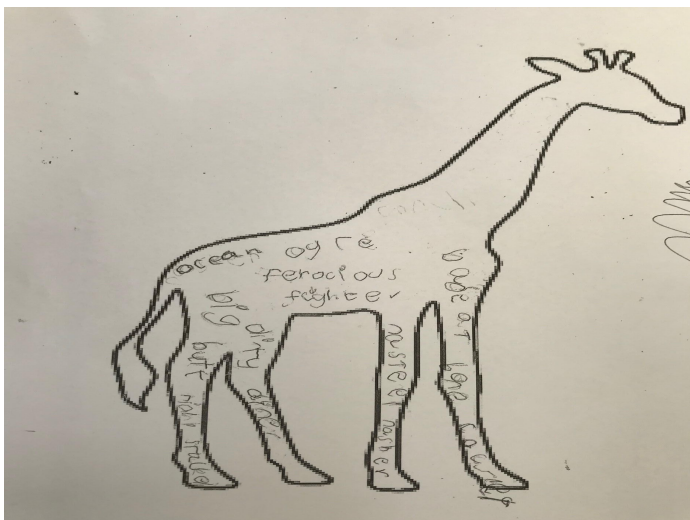
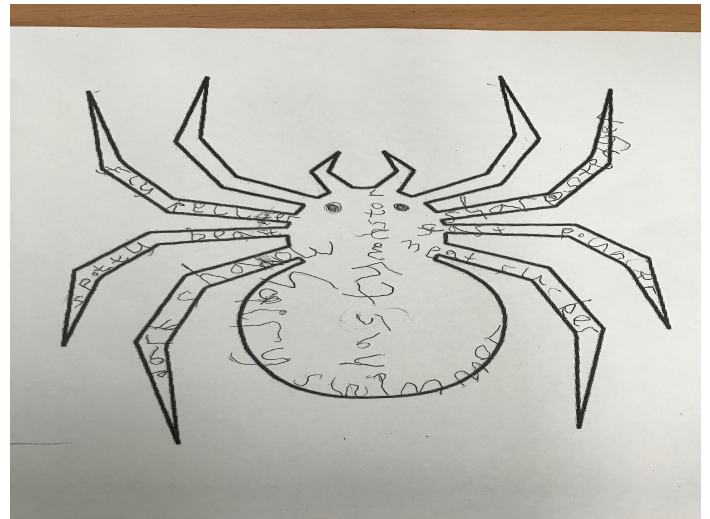
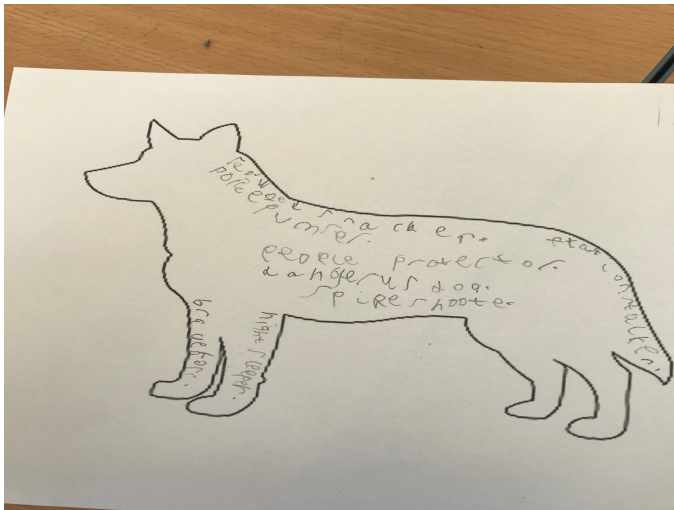
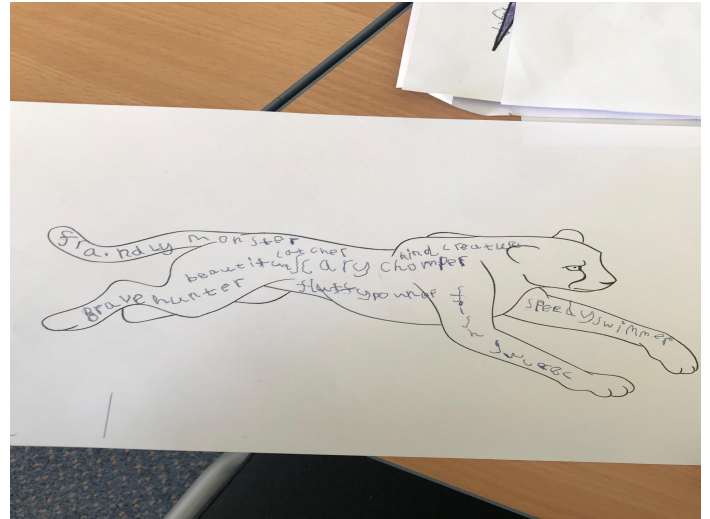
# Interactive Maths

It's no surprise that our Mrs Wilton has been shortlisted for the TES Awards Maths Teacher of the Year - another great interactive Math lesson in EW class this week.



# Owls Class Poems

Owls have been listening to and performing poems for the last few weeks. We now know about alliteration, rhyme and kennings. We planned our own new sea creature and created our own kennings to write a shape poem.



# Anglo Saxon Food

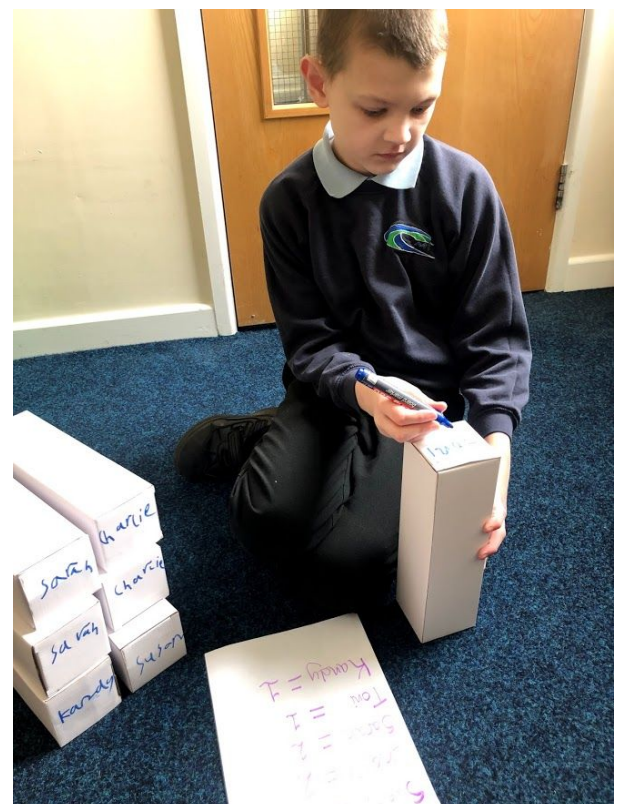
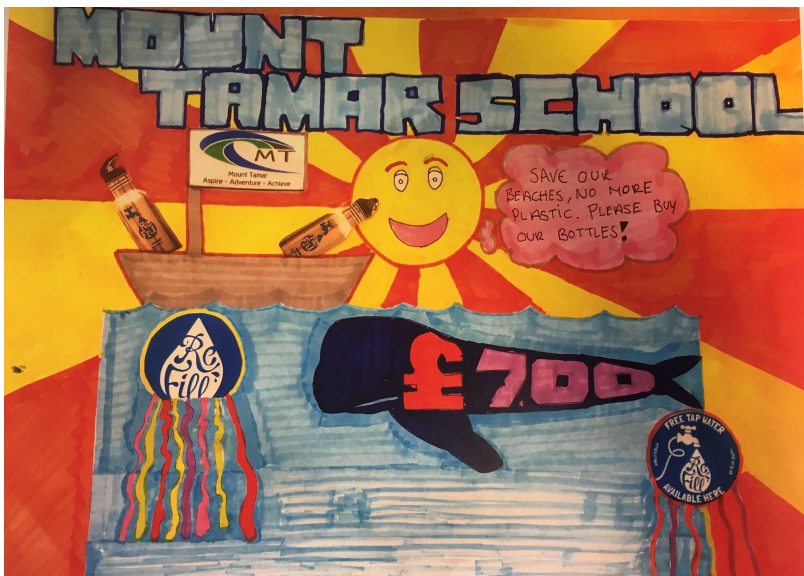
Class CR have been working hard on their Topic. They prepared and tasted food from the Anglo Saxon period.



# Water Bottle Sales!

CR class have sold our first 7 bottles!! Here they are being carefully packaged ready for delivery!

If you would like to purchase a bottle then please either go to our reception or email Miss Ritchie on [clairer@mounttamar.org.uk](mailto:clairer@mounttamar.org.uk)



# Coat of Arms

CR Class have been busy creating designs for their coat of arms this week. On Friday they worked on finishing their coats of arms using natural materials, such as flowers and leaves to dye their flags.



# Pizza Making

CR Class have also been making some pizzas for their lunch this week, haven't they had a busy week!



# EW Class Recipes of the Week

Try these at home, take some pictures and send them to class EW to be featured in next weeks newsletter. You can also try a different version of this for example a vegetarian alternative.



## Chicken with black bean sauce served with rice

### Ingredients

- 2 tbsp sunflower oil
- 1 red onion, thinly sliced
- 2 red peppers, seeds removed, sliced
- 1 garlic clove crushed
- 2 red finger chillies, seeded and finely sliced on the diagonal
- 4 small chicken breasts skinned and sliced into long strips
- 4 spring onions cut into 4cm/1-2in slices
- 1 tsp cornflour
- 6 tbsp blackbean sauce from jar
- 2 tbsp dry sherry (optional)
- 75ml/3fl oz water
- 1 tbsp chopped fresh coriander

### Method

1. Heat the sunflower oil in a large wok or frying pan, add the red onion and pepper and stir fry for 1-2 minutes.
2. Add the garlic, chilli and chicken to the onion mixture and cook over a very high heat for about 4 - 6 minutes, or until chicken is sealed and tender.
3. Add the spring onions to the wok and cook for another minute. Place the cornflour in a small bowl and add the black bean sauce, sherry if using and water. Whisk until well combined. Add the sauce mixture to the wok and allow to thicken slightly.
4. Serve with boiled or steamed rice

# EW Class Recipes of the Week

Try these at home, take some pictures and send them to class EW to be featured in next weeks newsletter.

## Honey cheesecake with raspberries

### Ingredients

- 4 lemon shortbread biscuits (about 85g)
- 140g full fat soft cheese
- 50ml double cream
- 1 tbsp caster sugar
- 2 tbsp honey
- , plus 1 tsp extra
- 125g punnet raspberry



### Method

1. Sit 2 x 9cm metal rings on 2 small serving plates. Crush the biscuits in a bag with a rolling pin, then divide between the rings, pressing down to form the base.
2. Put the soft cheese in a bowl, then whisk together with the double cream, sugar and 2 tbsp honey until soft peaks form. Spoon the mixture into the rings, then spread the top flat. You can chill the cheesecakes now until ready to serve.
3. Crush a third of the raspberries with 1 tsp honey, then gently fold in the rest. Using a blowtorch, warm around the edge of the ring and lift off - or use a knife to run around the inside of the ring, and lift off.
4. Spoon over the raspberries and serve.

# EW Class

## Primary Quiz of the Week

Please complete this quiz at home with your parents and carers and bring back to class EW. Winning entries will receive a prize. Good luck!

### Maths

Write down as many times tables as you can. (see class EW if you would like a multiplication square).

### English

What is:

A noun?

An adjective?

A verb?

Can you give an example of each one?

### Science

Who was the first person to walk on the moon?

### Geography

What is the capital of Canada?

### History

Where did the battle of 1066 commence?

### PE

How many bones are there in your body?

# EW Class

## Secondary Quiz of the Week

Please complete this quiz at home with your parents and carers and bring back to class EW. Winning entries will receive a prize. Good luck!

### Maths

What is the first six digits of Pi?

### English

Name 3 types of poetry and give an example of at least one.

### Science

Who created electricity?

### Geography

What is the capital city of Serbia?

### History

In 1066 who made a claim to the throne?

### PE

Name three famous cricket grounds.

# Upcoming SATs & GCSE Exams

Well what a busy week we have coming up! Next week sees the Year 6 students taking on the Key Stage 2 SATs. They start on Monday 13th May and finish on Thursday 16th May. The timetable is shown below and will need a huge level of support to ensure that all of the students are able to take them individually. I am sure that we will ensure that the SATs are a great success just like last year.

## SATs Timetable

Monday 13th May	English spelling, punctuation & grammar - papers 1 and 2
Tuesday 14th May	English Reading
Wednesday 15th May	Maths Papers 1 and 2
Thursday 16th May	Maths Paper 3

We also will have GCSE Exams on Monday Morning and Tuesday Afternoon (Computer Studies and Biology).

I hope that you all will wish them every success as they go through their exams, tests and checks.

Chris Holl  
Assistant Headteacher & Exams Officer

## Exam Timetable 2019 Maths English and Science

Cambridge	627	English First language (Core)	Paper 1	Core	1 Hour 30 Mins	Tuesday	1st May 2019 AM
AQA	8461/1F	Biology	Paper 1	Foundation Tier	1 Hour 45 Mins	Tuesday	14th May 2019 PM
Pearson Edexcel	1MA1 1F	Mathematics	Paper 1	Non Calculator Foundation Tier	1 Hour 30 Mins	Tuesday	21st May 2019
AQA	8463/1F	Physics	Paper 1	Foundation Tier	1 Hour 45 Mins	Wednesday	22nd May 2019
Pearson Edexcel	1MA1 2F	Mathematics	Paper 2	Calculator Foundation Tier	1 Hour 30 Mins	Thursday	6th June 2019
AQA	8461/2F	Biology	Paper 2	Foundation Tier	1 Hour 45 Mins	Friday	7th June 2019 PM
Pearson Edexcel	1MA1 3F	Mathematics	Paper 3	Calculator Foundation Tier	1 Hour 30 Mins	Tuesday	11th June 2019
AQA	8463/2F	Physics	Paper 2	Foundation Tier	1h 45m		14 June 2019 am

Note - Friday PM for the Biology AQA Exam Paper 2

## **Information for parents:**

2019 national curriculum tests at the end of key stages 1 and 2



Standards  
& Testing  
Agency

## Key stage 1 tests – year 2 pupils

Your child's teacher is responsible for judging the standards your child is working at in English reading, English writing, mathematics and science, by the end of key stage 1. To help inform those judgements, pupils sit national curriculum tests in English and mathematics, commonly called SATs. They may also sit an optional test in English grammar, punctuation and spelling.

The tests are a tool for teachers to help them measure your child's performance and identify their needs as they move into key stage 2. They also allow teachers to see how your child is performing against national expected standards.

The tests can be taken any time during May and they are not strictly timed. Pupils may not even know they are taking them as many teachers will incorporate them into everyday classroom activities.

Subject	Test paper
English reading	Short text and questions Long text with separate questions
Mathematics	Arithmetic Mathematical reasoning
English grammar, punctuation and spelling (optional test)	Spelling Punctuation and grammar (including vocabulary)

Teachers will use the results from these tests, along with the work your child has done throughout the year, to help them reach their own judgements about how your child is progressing at the end of key stage 1.

These teacher assessment judgements will be reported to you by the end of the summer term.

## Key stage 2 tests – year 6 pupils

If you have a child in year 6, at the end of key stage 2, they will take national curriculum tests in English grammar, punctuation and spelling, English reading and mathematics.

The tests help measure the progress pupils have made and identify if they need additional support in a certain area. The tests are also used to assess schools' performance and to produce national performance data.

The key stage 2 tests will be taken on set dates unless your child is absent, in which case they may be able to take them up to 5 school days afterwards.

Date	Subject	Test paper
Monday 13 May	English grammar, punctuation and spelling	Punctuation and grammar (including vocabulary) Spelling
Tuesday 14 May	English reading	English reading
Wednesday 15 May	Mathematics	Arithmetic Mathematical reasoning
Thursday 16 May	Mathematics	Mathematical reasoning

At the end of the summer term you should receive test results for:

- English grammar, punctuation and spelling
- English reading
- mathematics

### Teacher assessment

As there is no test for English writing, this will be reported as a teacher assessment judgement. This is a judgement teachers will make, based on your child's work at the end of key stage 2. You will also receive a teacher assessment judgement for science.



#### How can you help your child to prepare?

Teachers will make sure all pupils in their class are prepared for the tests. There's nothing specifically test-related that you should do to prepare your child.

You should follow the general advice teachers give about supporting your child's education throughout the year.

#### What do the tests look like?

You can look at [past papers](#) by clicking on the hyperlink or searching online at [www.gov.uk/STA](http://www.gov.uk/STA).

### Further information

Your child's teacher will be able to answer any questions you may have about the tests and teacher assessment judgements.

For more details you can visit [www.gov.uk/STA](http://www.gov.uk/STA) or watch our [short videos](#) for parents about the tests at key stage 1 and key stage 2.

© Crown copyright 2019

Information for parents: 2019 national curriculum tests at the end of key stages 1 and 2  
Electronic version product code: STA/19/8341/e ISBN: 978-1-78957-252-0

You may re-use this document/publication (not including logos or images) free of charge in any format or medium, under the terms of the Open Government Licence v3.0. To view this licence, visit [www.nationalarchives.gov.uk/doc/open-government-licence/version/3](http://www.nationalarchives.gov.uk/doc/open-government-licence/version/3) or email: [psi@nationalarchives.gsi.gov.uk](mailto:psi@nationalarchives.gsi.gov.uk).

This document is available for download at [www.gov.uk/government/publications](http://www.gov.uk/government/publications).

**OGL**

# Term Dates 2019/2020



## May Half Term

- Last day of term: 24th May 2019
- First day back to school: 3rd June 2019

## Summer Holidays

- Last day of term: 26th July 2019
- First day back to school: 4th September 2019

## October Half Term

- Last day of term: 18th October 2019
- First day back to school: 5th November 2019

## Christmas Holidays

- Last day of term: 20th December 2019
- First day back to school: 6th January 2020

## February Half Term

- Last day of term: 14th February 2020
- First day back to school: 24th February 2020

## Easter Holidays

- Last day of term: 27th March 2020
- First day back to school: 14th April 2020

## May Bank Holiday

- 4th May 2020-

## May Half Term

- Last day of term: 22nd May 2020
- First day back to school: 1st June 2020

## Summer Holiday

- Last day of term: 24th July 2020

# LOST PROPERTY

We have recently received a lot of feedback from parents and carers that children are “misplacing” items of school uniform. We appreciate that this can be costly and want to try to help as much as possible.

As such, we now have a new system in place in school.

We now have a lost property “container” that will be stored in the kitchen next to reception. Cleaners and hostel staff will place any items found in this bin. Hopefully, this will make it easier for children, staff and parents to find any missing items.

Please note that the container will be emptied at the end of each term.

Also be aware that you can always give me a call to have a look for you.

Kind Regards  
Hayley  
01752 355018

# Come and try Horse Riding

South Dartmoor Riding for the Disabled meets at Fitzworthy Equestrian Centre (PL21 9PH).

Our activities are specially designed for children and adults with physical and/or learning difficulties to receive physical and psychosocial therapy, enjoyment and a chance to achieve goals.

Why not join us today.

It's what you  
**can**  
do that counts

SOUTH DARTMOOR RDA

We meet on **Tuesdays** between 6:15 pm and 8 pm (each session is 45 minutes and we make a small charge of £5 per session to help cover the cost of hiring ponies and the indoor arena)

If you'd like to know more, please call Pauline on 01752 704134 or you can email us on [jane.ford@mvvuk.co.uk](mailto:jane.ford@mvvuk.co.uk)

[www.southdartmoorrda.uk](http://www.southdartmoorrda.uk)

[www.rda.org.uk](http://www.rda.org.uk)



**RDA**   
Riding for the Disabled Association  
Incorporating Carriage Driving

# Coffee Morning for Parents & Carers



**Next coffee morning dates:**

**23rd May**

**Please come along to this informal  
get together. It's a lovely opportunity  
to meet other parents and carers.**

# HappyMaps<sup>9</sup>



**A website for parents and carers.**

Reliable and up-to-date resources on  
emotional health for your children.

For all ages from babies to young adults.

**www.happymaps.co.uk**

Worried about your child's behaviour or mental health ?

Not sure where to start looking for help ?

HappyMaps will guide you to websites, books, videos and  
Apps to help you and your child plus there is information  
on being referred for specialist help, how to find  
counselling and parent support groups.

# FREE INFORMATION EVENT

Tuesday 14 May, 4.30pm - 6.30pm  
Kings Road, PL1 5QG

**For parents or carers of Year 9 and  
Year 10 students with Education,  
Health and Care Plans (EHCPs)**

You are cordially invited to visit City College  
Plymouth to view our amazing facilities and  
to find out about the post-16 options and  
pathways for students with EHCPs

- Supported Internships
- Post-16 Education Options
- Personal Development
- Pre-employment Programmes
- Apprenticeships



**BE PART  
OF IT**

Please register your attendance by  
calling **01752 305885** or e-mail  
[learningsupport@cityplym.ac.uk](mailto:learningsupport@cityplym.ac.uk)



SEA-ing Changes is a collaboration between Arterne: Enriching the next generation CIC and Beach Schools South West which offers an activity based group programme on the beach, for whole families, focused on mental health promotion and behavioural aspects. Families are invited to attend 5 sessions on the beach and will take part in a number of activities and discussions. The group programme can take place during all weathers.

1.	4 <sup>th</sup> May 2019 (provisional) 09:30 – 12:30 / 13:30 – 16:30	Bovisand Beach
2.	18 <sup>th</sup> May 2019 (provisional) 09:30 – 12:30 / 13:30 – 16:30	Bovisand Beach
3.	1 <sup>st</sup> June 2019 (provisional) 09:30 – 12:30 / 13:30 – 16:30	Bovisand Beach
4.	15 <sup>th</sup> June 2019 (provisional) 09:30 – 12:30 / 13:30 – 16:30	Bovisand Beach
5.	29 <sup>th</sup> June 2019 (provisional)ffn 09:30 – 12:30 / 13:30 – 16:30	Bovisand Beach

If you are a professional wanting to reserve a place for a family, please contact Arterne CIC on 07554665461 or Beach Schools South West on 07824388079

Arterne website details: [www.arterne.com](http://www.arterne.com)

Beach Schools South West website details: [www.beachschoolssouthwest.co.uk](http://www.beachschoolssouthwest.co.uk)

# Progeny

## Parent and Carer Workshops Mental Health Awareness and Young People

Location	Date and Time
Courtlands Special School	Wednesday 12th June 2019 9;30am-11:30am

These workshops are split into a 1 hour information session with the second hour providing an opportunity for Parents and Carers to ask questions/gain information from a panel of professionals comprising of The Zone, CAMHS and Young Devon.

**Please contact The Zone for further information and to book these sessions.**

The Zone

Registered office: Youth Enquiry Service (Plymouth) Ltd,  
14-16 Union Street,  
Derry's Cross,  
Plymouth  
PL1 2SR

**T: 01752 206626    M: 07837066484    W: [www.thezoneplymouth.co.uk](http://www.thezoneplymouth.co.uk)**



## **Plymouth Parent Carer Voice Events**

The information below is about forthcoming events that parents and carers with children and young people with SEND might like to be involved with.



- [Family Fun Day](#) - Wednesday 20 February 2019  
A family fun day for families with children with Special Educational Needs and Disabilities.
- [Accessing Public Services with CEREBRA](#) - Monday 4 March 2019  
A workshop for parents / carer and professionals who support them.
- [Behaviour Toolkit \(Primary\)](#) - Monday 29 April 2019  
A workshop for families wanting support in making a behaviour plan.
- [SEND parent carer Conference](#) 9.30-2.30 Wednesday 8th May 2019  
<https://www.eventbrite.co.uk/e/ppcv-parent-carer-send-conference-080519-tickets-56588074454>
- [Sleep with Cerebra - Primary School](#) at the Guildhall 10-2pm Tuesday 4th June 2019 for parents and carers
- <https://www.eventbrite.co.uk/e/ppcv-sleep-with-cerebra-primary-school-tickets-56946061202>

Bookings can be made through Eventbrite by clicking the links above.

For more information please contact Claire Paddon at: [claire@plymouthpcv.co.uk](mailto:claire@plymouthpcv.co.uk)