

# Mount Tamar Safeguarding Team



**Matt Bindon**  
Designated  
Safeguarding Lead



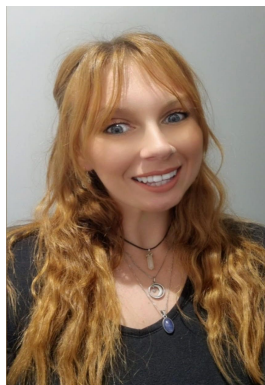
**Laura Bolton**  
Deputy Designated  
Safeguarding Lead

**We strive to provide a safe and secure environment where our students are provided with appropriate education, support and guidance which promotes personal safety and well-being.**

**MASH Referral Services**  
**01752668000 - ask for Children's Social Care, or**  
**[mash@plymouth.gov.uk](mailto:mash@plymouth.gov.uk)**



**Shaughn Lewis**  
**Level 3**  
**Safeguarding**  
**Trained (Primary)**



**Shannon Fuller**  
**Level 3**  
**Safeguarding**  
**Trained (KS3)**



**Natalie Knight**  
**Level 3**  
**Safeguarding**  
**Trained (KS4)**



**Colin Bull Level**  
**3 Safeguarding**  
**Trained**  
**(Secondary)**



**Rebecca Harvey**  
**Level 3**  
**Safeguarding**  
**Trained (Seymour)**



**Claire Ritchie**  
**Level 3**  
**Safeguarding**  
**Trained (Prospect)**